

PART OF THE NORTH 1/2 OF SEC. 22, T.7N., R.1E., S.L.B.&M.

WOLF CREEK SUBDIVISION NO.1

TAXING UNIT 28

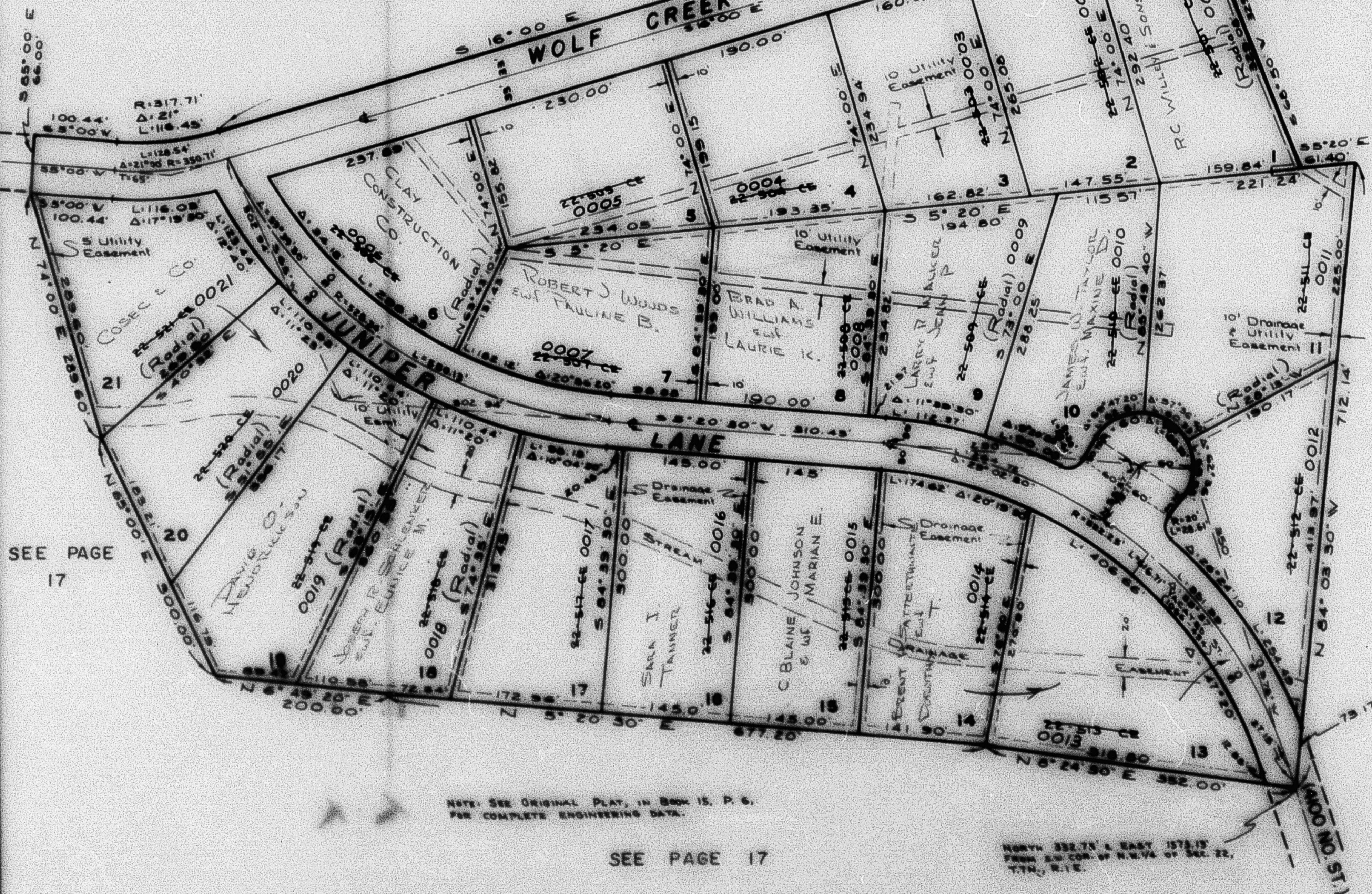
WEBER COUNTY

PREFIX 22-018

SCALE 1" = 100'

EXCEPT WHERE OTHERWISE SHOWN,
ALL LOTS ARE OWNED BY:
WOLF CREEK DEVELOPMENT CORP.

SEE PAGE 17



SEE PAGE
17

NOTE: SEE ORIGINAL PLAT, IN BOOK 15, P. 6,
FOR COMPLETE ENGINEERING DATA.

SEE PAGE 17

NORTH 332.7N & EAST 1578.15
FROM S.W. COR. OF N.W. 1/4 OF SEC. 22,
T.7N., R.1E.